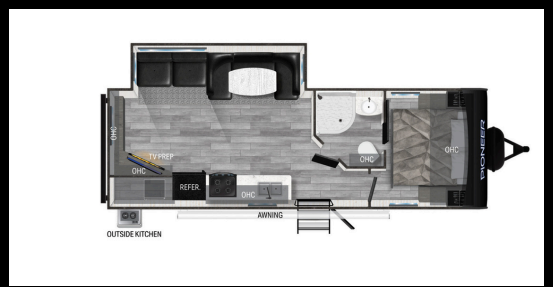


FOR SALE SITE 30



\$39,900



ABOUT

Camper: 2019 Heartland Pioneer 27'
Sleeps 3 comfortably 4 with a short person. Outdoor kitchen, outdoor shower, belly storage.

Lot is very well maintained, landscaped and paved to walk around entire camper.

Price will include:

- Large Deck with well built Covered Roof with Gutters
- Large Firepit area
- 2024 Seasonal Rate Paid
- 2 Sheds (1 is less than 2 years old)
- Trimmer and Manual Mower
- Chairs



LARGE OPEN LIVING SPACE

Living area with large slide out will include ample storage, TV, pull out couch with storage below, Dining area to convert to sleeping with storage below



KITCHEN AREA

Stove, microwave, oven, and nice sized fridge. Not pictured is an outside kitchen with small fridge and propane burner



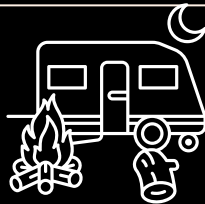
Walk thru bathroom with stand up shower into private Bedroom with Queen Bed and ample storage

CONTACT BECKY OR JOLEEN. TEXT PREFERRED.

BECKY: 608-692-0015
JOLEEN: 920-285-3922

+MUST BE APPROVED BY SILVERSPRING CAMPGROUND OWNERS PRIOR TO OFFER.

RNICKEL_80@YAHOO.COM



OPEN FROM APRIL 15 - SEPTEMBER 30
N5048 LUDWIG RD.
RIO, WI 53960

